

SDFL403

High Power Stadium Lighting Luminaire
need additional gear box



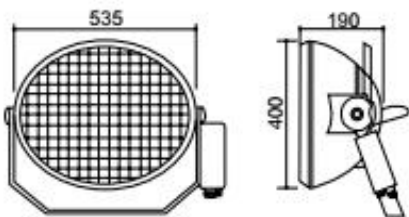
General:

This 2000w flood light system is sealed completely to make it dust proof and high-pressure waterproof to IP65. This also applies to the remote single ballast box and hot-restrike module, mounted on the floodlight. No internal cleaning is required.

Material and feature:

- *Heavy duty aluminum diecast shaping outer shell.
- *Professional lamp sockets support Osram K12S or Philips X528 double ended lamps.
- *Germany made super strong safety glass, capable to bear 2000W full power heat.
- *Anodized thick&bright aluminum reflector, distribute 30 degrees beam angle.
- *Places suitable for application:
Professional Sports field lighting

Dimention:



Packing information:

Thick carton with foam packing.
Carton size: 60*58*24CM/1PC



Lamp Install:



Matched Gear Box:

Heavy aluminum die casting body, IP65 waterproof, dust proof.
For 2000W control gears max.



HQI-TS 2000 W/D/S

HQI-TS | Short arc, no outer bulb for enclosed luminaires



Areas of application

- Sports stadiums and floodlight systems
- Sports halls and multi-purpose halls
- Airports
- Solar simulation, material testing
- Approved only for use in enclosed luminaires
- Outdoor applications only in suitable luminaires

Product benefits

- High efficiency
- Good to excellent color rendering
- Excellent color stability
- Small loss of luminous flux over the life of the lamp
- Hot restrike capable
- Compact dimensions for small spotlights
- Good positioning thanks to K12s base

Product features

- POWERSTAR quartz technology
- Light colors: neutral white (NDL), daylight (D)



Product datasheet

Technical data

Electrical data

Nominal wattage	2000.00 W
Rated wattage	1950.00 W
Lamp current	11.3 A
PFC capacitor at 50 Hz	50 µF*2
Nominal voltage	190 V
Ignition voltage	4.0 / 36 kVp ²⁾
Rated lamp efficacy (standard condition)	108 lm/W

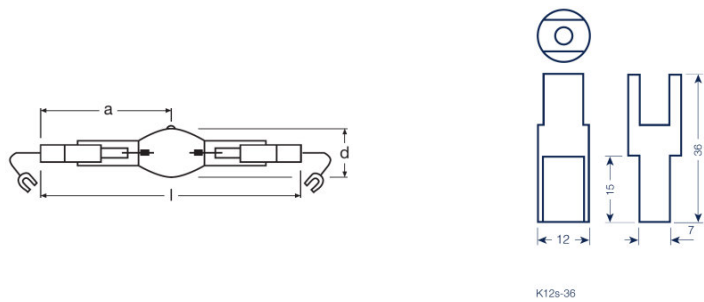
1) At rated voltage and $\cos \varphi \geq 0.9$

2) Minimum / Maximum

Photometrical data

Rated luminous flux	200000 lm
Color rendering index Ra	83
Color temperature	6100 K
Light color	860
Rated LLMF at 2,000 h	0.95
Rated LLMF at 4,000 h	0.90
UV protection	No

Dimensions & weight



Diameter	41.0 mm
Length	187.0 mm
Light center length (LCL)	93.0 mm
Product weight	61.00 g

Temperatures & operating conditions

Product datasheet

Maximum permitted outer bulb temperature	950 °C
Maximum permitted pinch temperature	390 °C

Lifespan

Rated lamp survival factor at 2,000 h	0.94
Rated lamp survival factor at 4,000 h	0.61
Lifespan B50	4000 h

Additional product data

Base (standard designation)	K12s-36
Design / version	Clear
Mercury content	180.0 mg

Capabilities

Dimmable	No
Burning position	p15
Enclosed luminaire required	Yes
Hot restart	Yes

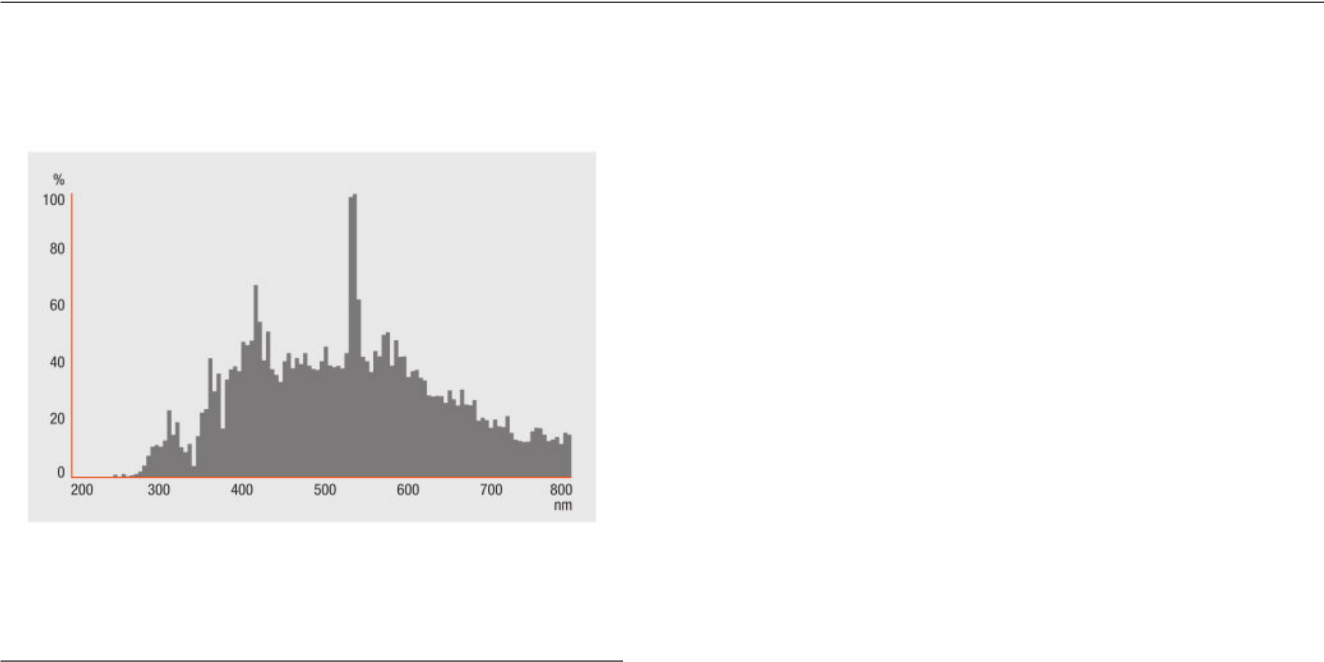
Certificates & standards

Energy efficiency class	A+
Energy consumption	2145 kWh/1000h

--	--

Product datasheet

Light Distribution



Spectral power distribution



Circuit diagram

Logistical Data

Product code	Product description	Packaging unit (Pieces/Unit)	Dimensions (length x width x height)	Volume	Gross weight
SDHQI2000	HQI-TS 2000 W/D/S	Shipping carton box 60	495 mm x 365 mm x 300 mm	542.06 dm ³	6436.00 g

The mentioned product code describes the smallest quantity unit which can be ordered. One shipping unit can contain one or more single products. When placing an order, for the quantity please enter single or multiples of a shipping unit.

Product datasheet

Disclaimer

Subject to change without notice. Errors and omission excepted. Always make sure to use the most recent release.

—



HID-High Power ballasts for MH lamps

BMH 2000

The HID High-Power ballast is an impregnated (HID standard) electromagnetic copper/iron ballast for use with an external ignitor for HID lamps.

Product data

• General Characteristics

Application code	2000W
Rated Ballast-Lamp Power	2000
Line Voltage	400 V
Line Frequency	50 Hz

• Operating Characteristics

Mains voltage safety (AC)	-10%/+10%
Mains voltage performance (AC)	-8%/+6%
Input current with PF-correct.	5.4 A
Input current w/o PF-correct.	9.6/10.3 A
Power losses gear	85 W
PowerFactor 100% output power	0.85 (min) -
PowerFactor w/o PF compens.	0.40 (min), 0.50 (max) -

• Wiring Characteristics

Connector type	Screw
----------------	-------

• Temperature Characteristics

T-winding maximum (tw)	130 (max) C
Delta-T normal conditions	75/80 C

• Product Dimensions

Length A1	230 mm
Width B1	113.0 mm
Height C1	100.0 mm
Fixing Hole Diameter D1	7 mm

• Approval & Application Chars

CE marking	No
ENEC certificate	No
CCC certificate	Yes

• Product Data

Pieces per pack	1
Packing configuration	1
Packs per outerbox	1
Net weight per piece	13 kg



2000W Ignitor

Z2000M ignitor for high power metal halide lamp

Electric Data

Working voltage: 380-420V ~

Frequency: 50/60Hz

For MH lamp: 2000W

Ignition Voltage: 4.0-5.0kV

Max casing temp.: 105°C

Max lamp current: 12A

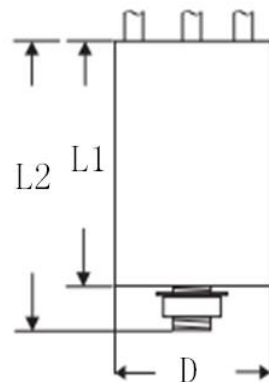
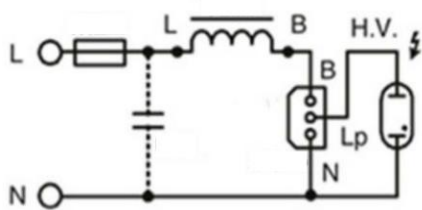
Dimension

Diameter (D): 50.0 mm

Length (L1): 75.0 mm

Length (L2): 85.0 mm

Wiring





Capacitor

Aluminum body with compact size
Use 2*50UF

Electric Data

Working voltage: 380-415V ~

Frequency: 50/60Hz

Rated voltage: 450V

Capacity: 50 UF

Max casing temp.: 105°C

Dimension

Diameter (D): 55.0 mm

Length (L1): 130.0 mm

Length (L2): 140.0 mm

